

10335 Jefferson Boulevard | Culver City, California 90232
T 310.839.6600 | F 310.559.1310 | w lrmltd.com

LANDSCAPE ARCHITECTURE | URBAN DESIGN

LRM

August 19, 2016

City of Los Angeles

Re: **Hollywood & Wilcox: Tree Protection Report**
Los Angeles, California

To Whom It May Concern:

After review of the project site, we determined that there are no protected tree species existing on the site, and that the existing trees may be demolished for construction

Please see the attached Tree Inventory mapping the locations and further information on the existing trees.

Respectfully yours,

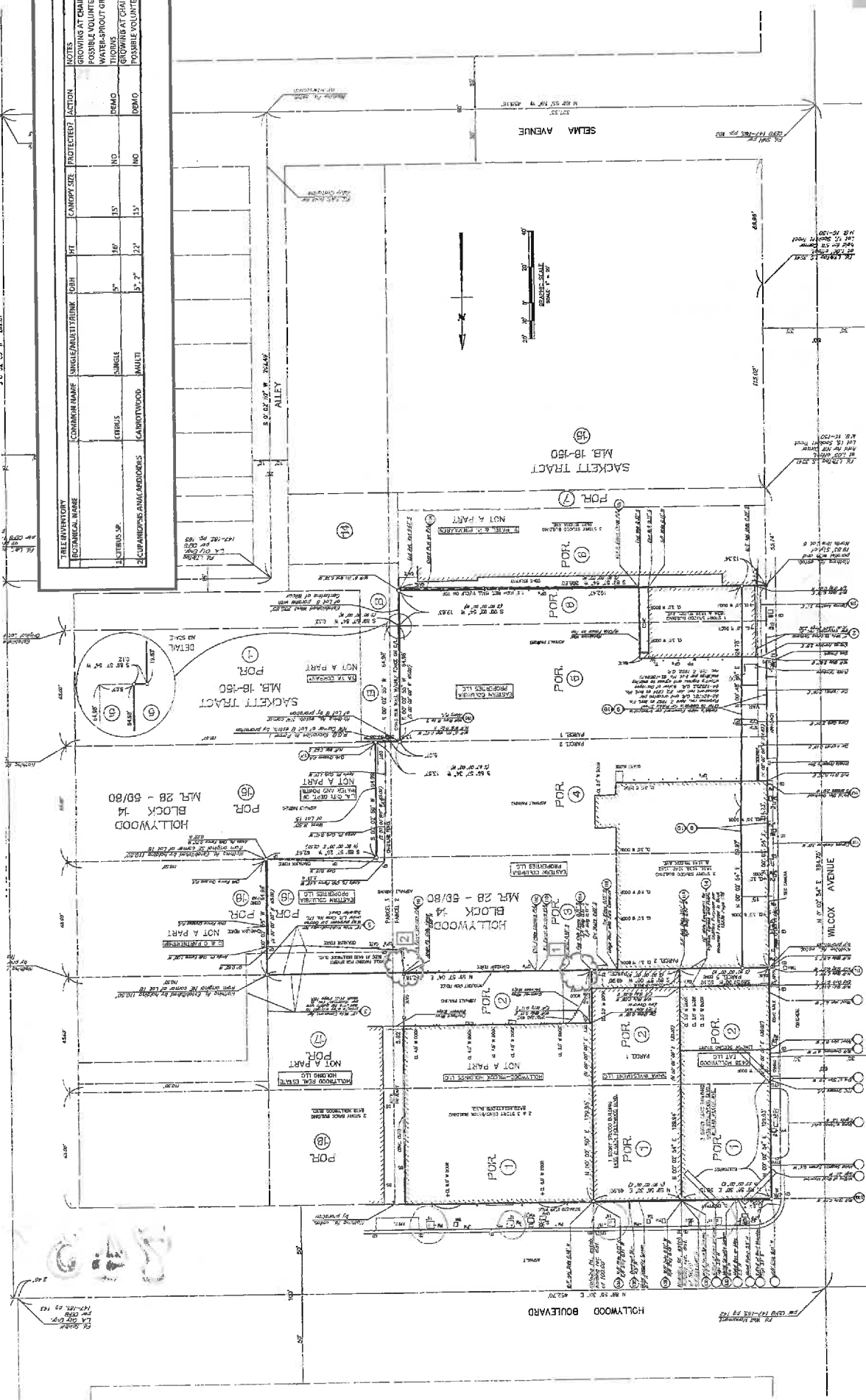


David K. Larkins
Managing Principal
DKL: dkl

74871

TREE INVENTORY

TREE INVENTORY	COMMON NAME	SINGLE/MULTI/TRUNK	DBH	HT	CANOPY SIZE	PROTECTED	ACTION	NOTES
1	SPRING SP.	SINGLE	5"	16'	13'	NO	PRMO	GROWING AT CHAIRMAN FENCE; POSSIBLE VOLUNTEER; VIGOROUS
2	SPRING SP.	SINGLE	5"	16'	13'	NO	PRMO	WATERPROOF GROW; LARGE THORNS
3	SPRING SP.	MULTI	5" x 2"	22'	13'	NO	PRMO	GROWING AT CHAIRMAN FENCE; POSSIBLE VOLUNTEER



77
 L.A. DIST. DIV.
 MAP 18-18-03-77
 1/17/18